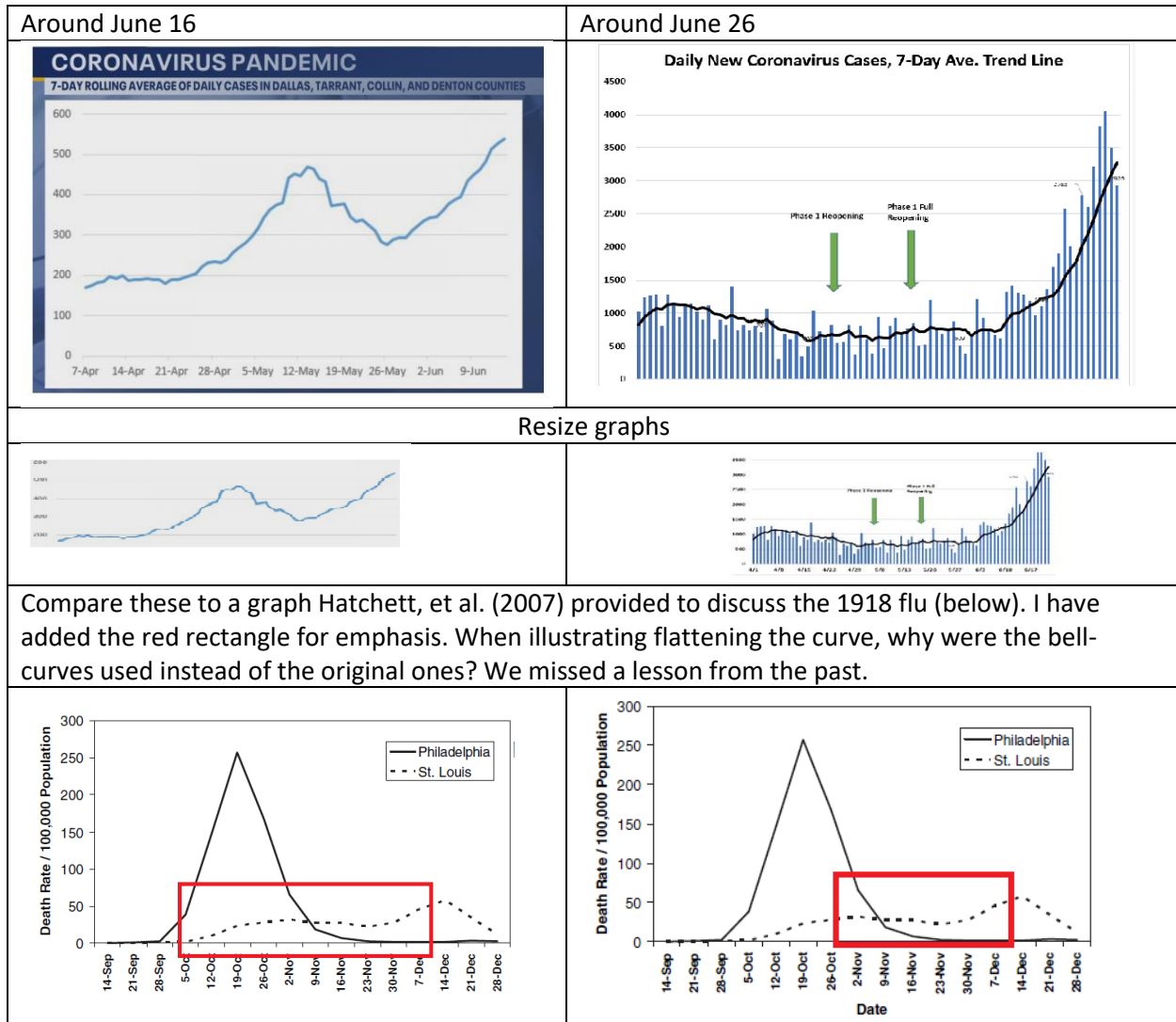


Take the following graphs from <https://www.fox4news.com/news/north-texas-covid-19-cases-hospitalizations-maintain-upward-trend> and <https://tallahasseeereports.com/2020/06/27/two-charts-show-positive-trends-for-florida-in-coronavirus-battle/>



Source: Hatchett, R. J., Mecher, C. E., & Lipsitch, M. (2007). Public health interventions and epidemic intensity during the 1918 influenza pandemic. *Proceedings of the National Academy of Sciences*, 104(18), 7582-7587. Retrieved at https://www.pnas.org/content/104/18/7582?_ac_lkid=f639-efd2-f4de-3e717151efc501